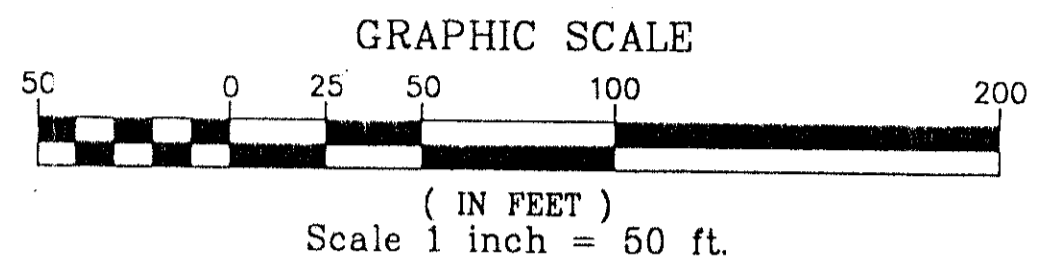
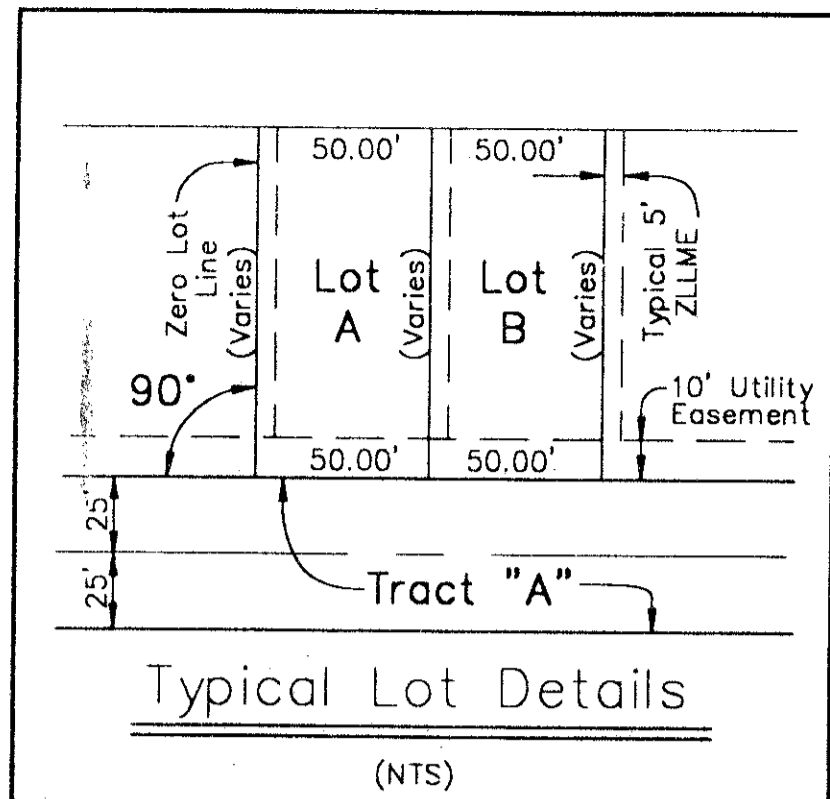


BOCA PINES II

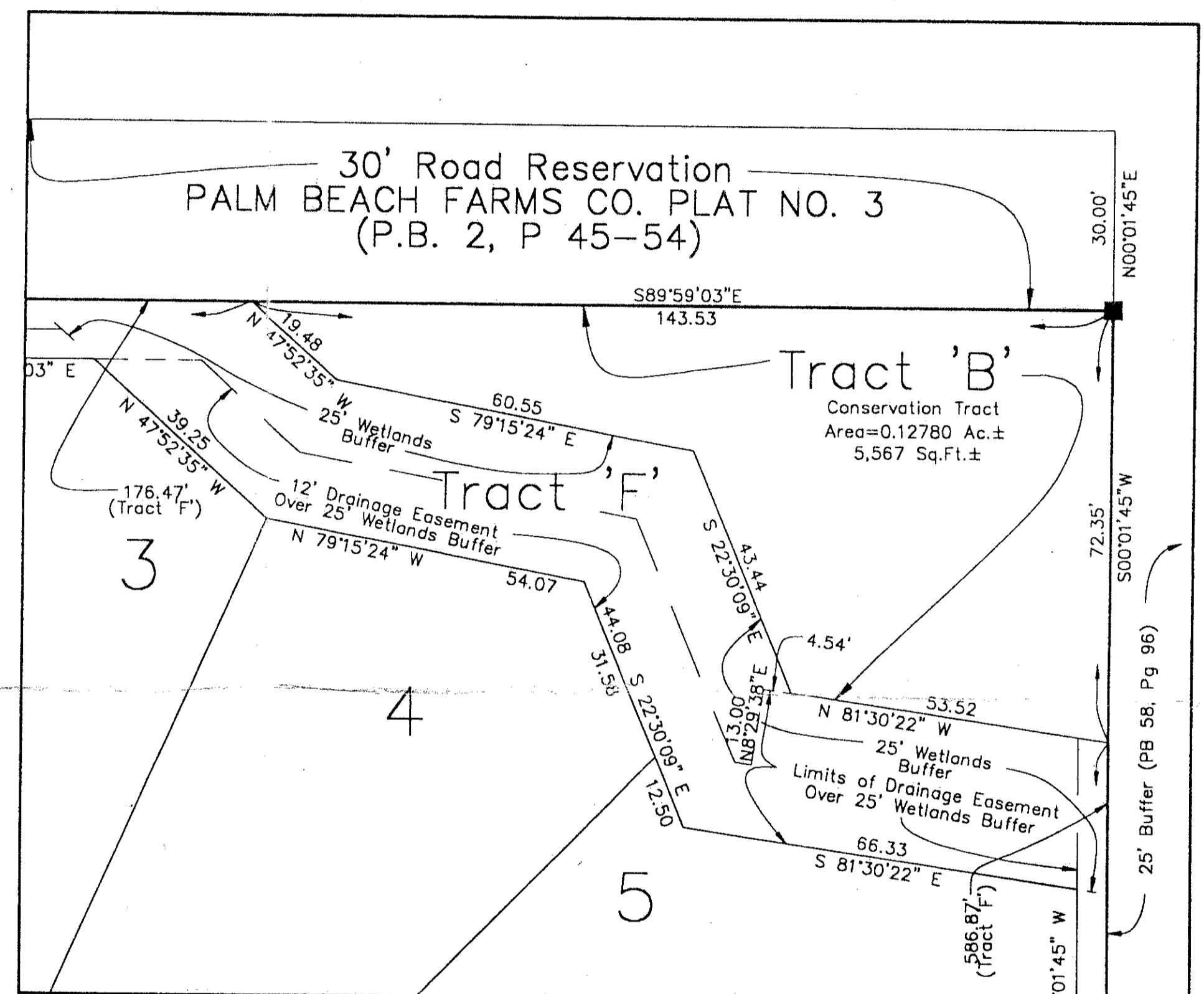
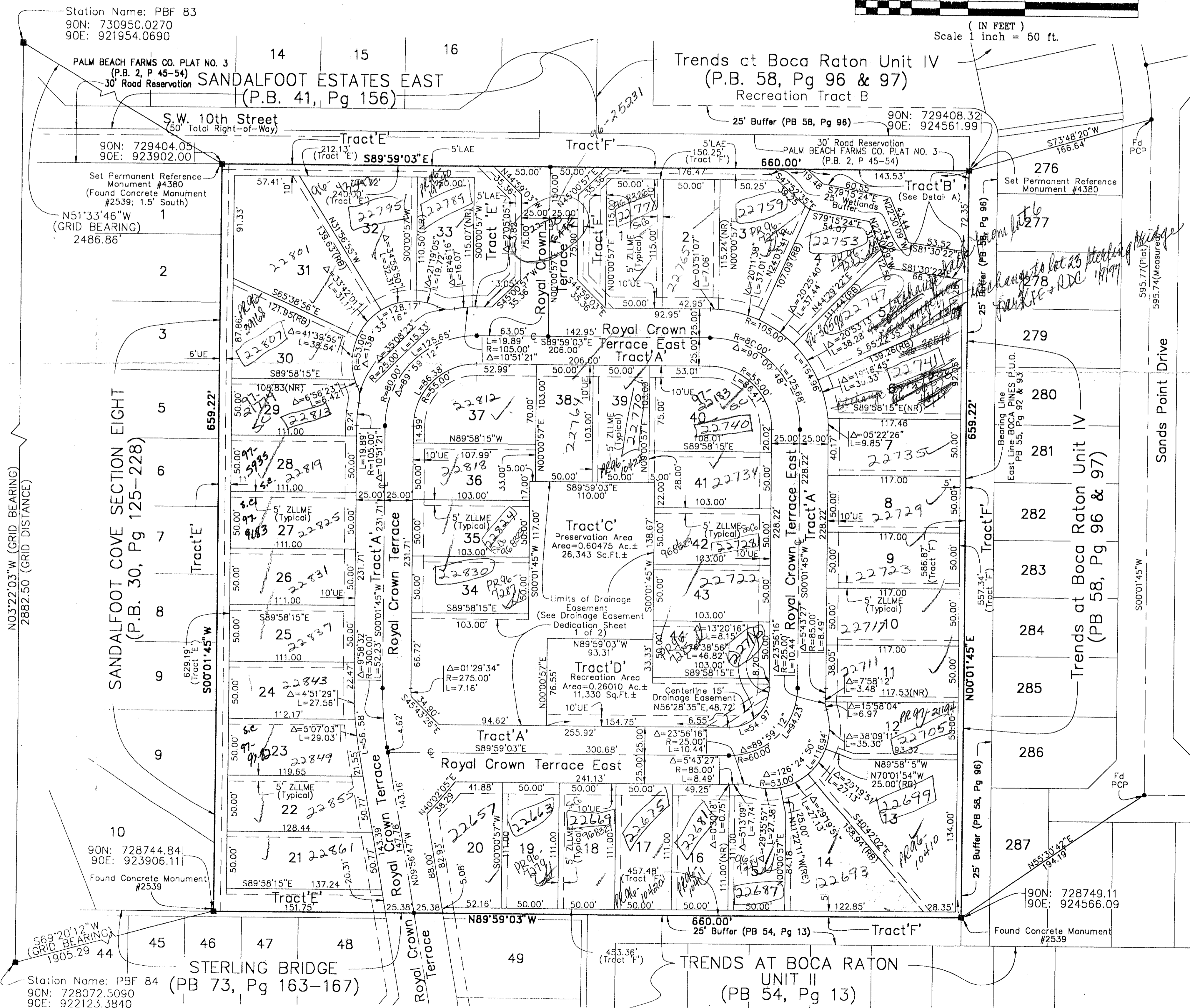
Being a replat of all of Boca Pines, P.U.D.,
 as recorded in Plat Book 55, Page 92 and 93, of the
 Public Records of Palm Beach County, Florida.
 Situate in Section 29, Township 47 South, Range 42 East
 March, 1995

PET. 84-43
App. # 0001
5/3/3/M

STATE OF FLORIDA SS
 COUNTY OF PALM BEACH
 This plat filed for record at _____
 this _____ day of _____
 19____ and duly recorded in Plat
 Book _____ on page _____
 DOROTHY H. WILKEN, CLERK of the
 Circuit Court.
 By: _____ D.C.



Sheet 2 of 2



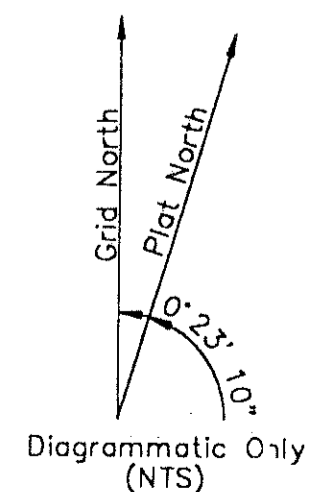
Coordinate System Notes:
 (Distances and Bearings)

Coordinates shown are Gric Coordinates:
 Datum = NAD 83 1990 Adjustment
 Zone = Florida East Zone
 Linear Units = US Survey Feet
 Projection = 1983 State Plane
 Transverse Mercator Projection

ALL DISTANCES SHOWN ARE GROUND DISTANCES
 (Except where noted)
 Scale Factor = 1.0000235
 Grid Distance = (Ground Distance) x (Scale Factor)

Bearing Rotation Example (Plat to Grid)
 PLAT Bearing = North 00° 01' 45" East
 Grid Bearing = North 00° 21' 25" East
 Rotation = -00° 23' 10" (Counter-clockwise)

- Map Legend :
- = Permanent Control Point
 - = Permanent Reference Monument
 - ⊕ = Centerline
 - Δ = Central Angle (Delta)
 - L = Feet
 - ⌒ = Arc Length
 - LAE = Limited Access Easement
 - NTS = Not To Scale
 - PB = Plat Book
 - Pg = Page
 - R = Radius Length
 - Typ = Typical
 - UE = Utility Easement
 - ZLLME = Zero Lot Line Maintenance Easement



Atlantic - Caribbean Mapping, Inc.
 PROFESSIONAL LAND SURVEYORS AND MAPPERS
 357 Liana Drive
 West Palm Beach, Florida 33415
 (407) 687-5898 - Fax (407) 471-8752

Project No. 93445	Dwg No. 445_P202	PLAT OF BOCA PINES II
----------------------	---------------------	--------------------------

0437-002

BOOK 75
 PAGE 17
 FLOOD MAP #2408
 ZONING RS
 SE 84-43
 PUD NAME Boca Pines P.U.D.
 ZIP CODE 33473

TAZ-789

75/17